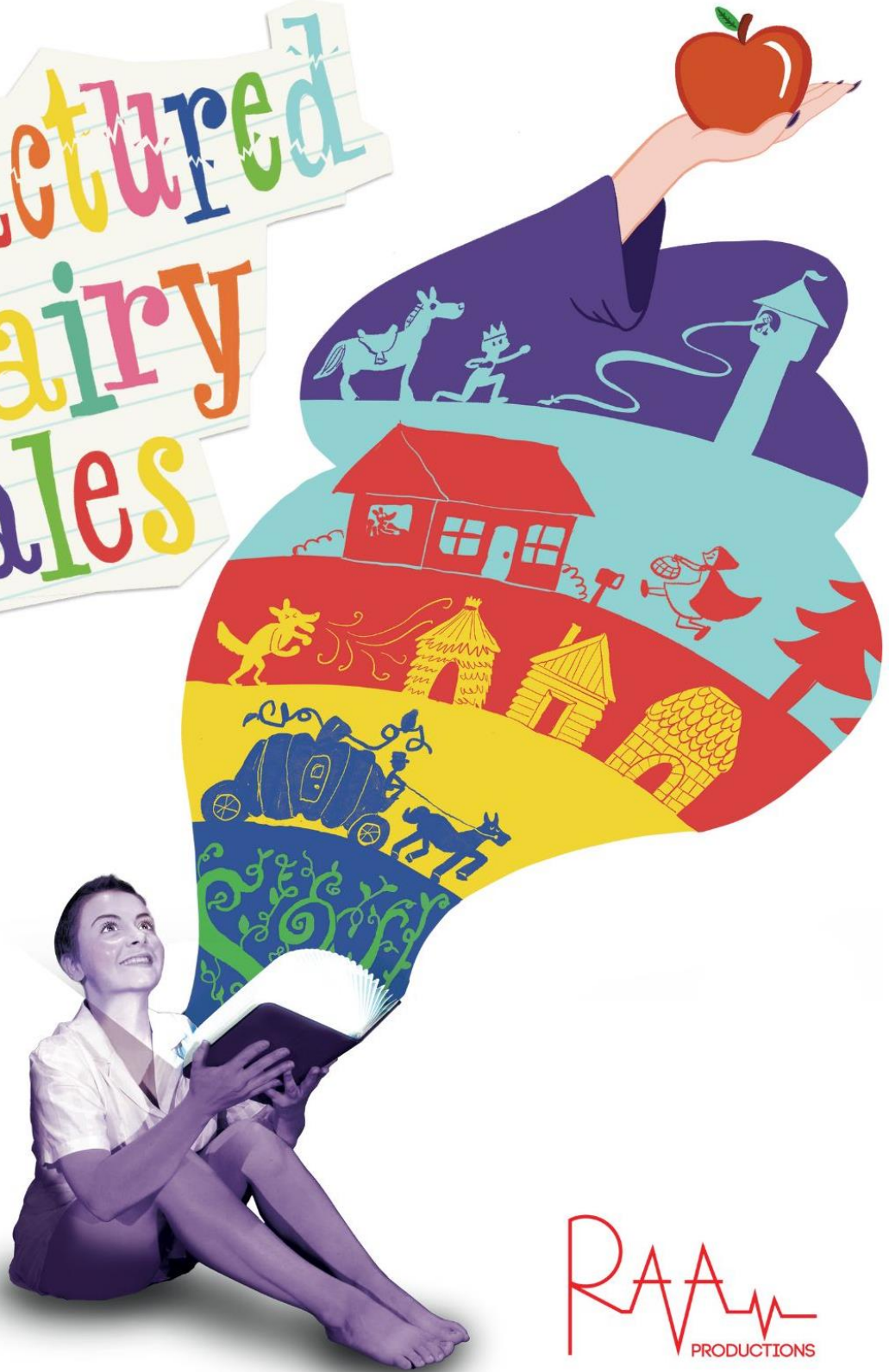


fractured fairy tales



RAA
PRODUCTIONS

PRESENTER INFORMATION

About *Fractured Fairy Tales*

Fairy tales have fractured!

Classic stories have tipped higgledy-piggledy and favourite characters are in a muddle. Two children whisked away to fairyland, find a bold Little Red, grumpy grandma, music loving pigs, a lonely giant, and love-struck prince and princess. They must piece the fairy tales back together before midnight.

Along the way, our heroes learn who to trust, when to help, kindness and to look beyond first impressions. Every choice turns a new page – can they rewrite the tales and find happily-ever-afters?

Featuring:

Carla Beard (*Round The Twist*, Queensland Theatre)

Martelle Simon-Green (Backbone Youth Arts),

Jacob Watton (Trent Dalton's *Love Stories*, Founding Artist RAVA

Productions, *Charlotte's Web*, *The Wind in the Willows*, Choreographer)

and Samuel Ashfield Webb (RAVA's *The Wind in the Willows*, Ad Astra)

Director: Alison Vallette

Devised by RAVA founding artists Jacob Watton, Courtney Wagner, Angela Ponting, and Carla Beard, Martelle Simon-Green, Jade Moon, Samuel Webb

Original Music: Harrison Paroz

Creative Producer: Ruth Atkinson

Set Design & Construction: Kerry Saul

Character Artwork & Graphic Design: Charlotte Fountain

AV Design: Ruth Atkinson

Costumes/Props: Alison Vallette

Produced by: RAVA Productions

Fractured Fairy Tales is made possible by the Australian Government's Regional Arts Fund, provided through Regional Arts Australia, administered in Queensland by Flying Arts Alliance.



Australian Government
Regional Arts Fund

REGIONAL
arts
AUSTRALIA

FLYING ARTS
ALLIANCE INC



About RAVA Productions

RAVA Productions is a collaboration between arts industry professionals Ruth Atkinson and Alison Vallette who join forces to produce live theatre readily accessible to audiences in regional and remote Queensland and suitable for a variety of venues. They aim to create projects that provide regional creatives with professional work linking to career pathways and opportunities in the arts Industry.

Since 2019, RAVA Productions has premiered new productions and developed six regional Queensland tours reaching more than 65 communities. Their children's production *Charlotte's Web* toured to 43 regional and remote communities across Queensland playing to more than 15,000 children and delivering over 77 primary schools' workshops in drama, dance and music. In 2022 and 2023, *The Wind in the Willows* premiered and toured to 23 Queensland regional communities, playing to schools students and family audiences and engaging children through workshops.

RAVA Productions works to identify emerging professional artists with connections to the Darling Downs area, building opportunities for them to extend their professional experience, and connecting them to industry career pathways.

Alison Vallette is a director/choreographer with professional dance credentials, having danced internationally and performed in music theatre productions that toured the United Kingdom, Europe and Australia. She has directed major musicals including *Mary Poppins*, *Wicked* and *Kinky Boots*. She directed RAVA's *Charlotte's Web* and *The Wind in the Willows*, adding her creative skills to the latest children's work, *Fractured Fairy Tales*.

Ruth Atkinson is a creative producer and presenter with experience across venue management, programming, and marketing for the Empire Theatre Toowoomba, QUT Gardens Theatre, as Director of the Judith Wright Centre of Contemporary Arts in Brisbane and most recently, as Co-Director for the Curious Arts Festival. In 2021/22, she mentored emerging artists across Queensland as a member of the Creative Business Champions for the Regional Arts Services Network. She is on the Executive Board for Queensland's Matilda Awards and Director for Curious Arts Inc. Ruth is business partner/CEO for Visual Focus, an audio-visual integration company based in Toowoomba.



TEACHERS & SCHOOLS WORKSHOPS

Fractured Fairy Tales cast are experienced as lead facilitators and able to share their skills in performance through workshop possibilities in Theatre and Dance linked to curriculum and designed for children in various age ranges and/or their teacher's, gaining professional development.

RAVA's team is proactive in contacting schools and schedule post-performance or in-schools' workshops, liaising on content and logistics to best benefit the children and community.

Their most popular workshops are best suited to primary school age children (Years 2-4) or the team can deliver different workshop content to suit secondary drama and dance students.

A specialist theatre workshop is available suited to Primary Teachers seeking Professional Development in delivering lessons through use of performing arts and imagination. RAVA issues certification for Teachers that align to the Professional Teachers Standards for Queensland.



PERFORMANCE SPECIFICS

DURATION

One Act no interval – 1 hour

Option: Q&A session by the artists with audiences is facilitated immediately after curtain call after the performance. Duration approx. 10 mins

MAXIMUM NUMBER OF PERFORMANCES PER DAY

Up to 2 performances per day or one performance
and a workshop session (two workshops simultaneously is possible)
10-12 performances per week depending on travel/workshops

MINIMUM BREAK BETWEEN PERFORMANCES

45-60 minutes (after end of audience/post-show engagements)
Eg: 9.30am and 11.30am performances is OK.

TOURING PERSONNEL

The touring party consists of 5-6 people.

One technician tours when venues can provide skill technical personnel.

Two technicians required for small un-managed halls and civic centres

Name	Role
Carla Beard	Henry
Martelle Simon-Green	The Witch, Pinky Pig, Cinderella
Jacob Watton	Felix, Perky Pig, Little Red, Rapunzel
Samuel Ashfield Webb	Giant, Prince Charming, Snow White
Simon Janetzki	Touring Technician

AUDIENCE ENGAGEMENT

OVERVIEW

The cast are each experience facilitators and performance teachers who present workshops and activities to engage the community arts participants and audiences of children.

Q&A sessions: Post show following curtain call, the cast engage the audience inviting questions from an audience. With their background, cast members can deliver a quality learning engagement to enhance the experience of young people attending the production.

A comprehensive Teachers Resources Pack and Workshop Menu are available to prepare children for their theatre experience at the theatre.

MARKETING

MARKETING COPY

One line

Fairy tales have fractured! Two children whisked away to fairyland help characters re-write their stories back before midnight.

Short

Fairy tales have fractured!

Two children whisked away to fairyland help characters re-write their stories before midnight. On the way, our heroes learn who to trust, who to help and that first impressions don't always count. They must make good choices to turn new pages and find the happy ending.

Extended

Fairy tales have fractured!

Classic stories have tipped higgledy-piggledy and favourite characters are all in a muddle. Two children, whisked away to fairyland, meet a bold Little Red, grumpy gran, disco pigs, a lonely giants, love-struck prince and princess. They must piece the fairy tales back together before midnight.

Along the way, our heroes learn who to trust, when to help, kindness and to look beyond first impressions. Every choice turns a new page – can they rewrite the tales and find happily-ever-afters?

MARKETING MATERIALS

[LINK TO DROPBOX MARKETING FOLDER](#)

A marketing package includes a range of images, hero graphic, e-mailable and printable digital posters, social media templates and banners, newsletter inserts, biographies of performers and sample media releases.

A Teachers Resource Kit, colour in characters and a Workshop Menu are available in the Education folder.

CONTENT WARNINGS / AUDIENCES TO AVOID

None! Totally family friendly

PRODUCTION DETAILS

TECHNICAL SUMMARY

The production has been designed to be flexible for small to large venues. Its set elements can be expanded across larger stages or can be adapted for compact use in range of small community and school venues.

The bump in requires 4 hours, including building the set, lighting and audio set up for the production.

SET:

The set is simply constructed by the touring company. It is a flat panel arrangement on wheels that holds an ultra-short throw projector on the set incorporated screen.

LIGHTING:

Lighting is minimal requiring use of standard rig with additional specials and toured LED battery/DMX controlled floor lighting fixtures. A simpler version suitable for small non-managed venues includes toured lighting with the set up by the touring technicians incorporating in-house equipment where possible. Front wash on push-up trees can be toured for small venues without in-house equipment or access to ladder/lifter on site.

AUDIO and AUDIO-VISUAL:

Audio includes a soundtrack of music themes and sound effects on the toured computer, with playback via Qlab through an in-house PA system. Images for the toured projectors is programmed to the Qlab program.

A toured PA System is available for venues without an in-house system. The Qlab playback includes backing tracks for songs. A desk send to a foldback speaker positioned side stage is required.

Four radio mics (lapel/headset style) are toured for use by the performers on stage. For large venues, additional mics may be required at front of stage to provide sound reinforcement. All audio equipment (eg portable PA system) can be toured for use as required.

The company tours the projectors required, components and Cat6 cabling. A AV tie-line from side stage to the biobox is desirable. Playback can be set side stage.

Fractured Fairy Tales cannot play outdoors due to the audio-visual set components.

EXAMPLE PRODUCTION SCHEDULE

Note that the cast members assist with bump in/out of the set elements and organise props and costumes as part of bump in.

Bump in – up to 4 hours

Company is met at the venue by a local coordinator with keys and providing the details arranged for use of the venue equipment, attendances and seating for audiences and arrangements for community engagement.

A WHS briefing is delivered and any venue supplied personnel advised of bump in support requirements.

Performance – 1 hour approximately plus pre/post show calls

Touring Technicians operates lighting and audio and call the show

Bump out - 1 hour maximum

Two shows can be scheduled in one day (eg: two schools shows 9.30am and 11.30am – or a family show at 6pm on day 1 and 10am schools show on day 2 or for same day, a 1pm and 6pm show)

Please allow 1 hour between school performances

REQUIRED FROM VENUE

A liaison person with responsibility to coordinate the use of the venue, its equipment and liaise with the Company.

Arrangements for Ticketing, Marketing and Front of House

Liaison with the local schools and location for workshops

Duty technician if required by venue

STAGE SIZE

Flexible in size but optimal stage width is 8m and stage depth is 6m.

All sets, costumes and hand props required are toured by RAVA Productions.

LIGHTING

Standard colour wash rig plus specials

Some LED battery/DMX floor specials are toured

Portable lighting equipment will be toured for unmanaged/small hall venues

Venue to supply where possible

Standard in-house two or three colour wash with specials.

Ability to focus lighting via a platform ladder or lifter on site.

SOUND

The Soundtrack tours via RAVA computer running Qlab,

It requires 3.5mm output to dual channel input at an audio desk (toured for venues without equipment)

One send from audio desk to a side-stage foldback speaker

Four radio microphone kits (worn by artists) providing reinforcement are toured. 4 inputs for receivers required at audio desk
 Pre-show music (children appropriate) – dual input from Qlab is played.
 RAVA will tour a PA system, foldback wedge and audio mixer as required for unmanaged venues with minimal equipment.

Venue to supply where possible

In-house PA System and mixer with minimum 8 channels and one send for Qlab outputs.

Inputs: 4 radio mics, Dual channel Qlab playback from Mac computer

PROPS AND FAST CHANGES

A trestle table and a costume rack are to be positioned off-stage on either side of stage in the wings (2 tables & 2 racks where possible). These hold various props and fast change costumes that cast will organise side stage. Performers coordinate and supply all props and costumes required.

WARDROBE

All performer costumes and accessories are toured by the Company.

Venue to supply

Minimum 1 dressing room for 4 persons with mirrors (2 dressing rooms where available)

Access to bathroom facilities from backstage

Access to drinking water and if possible, facilities for hot water (tea/coffee) preferably backstage

Access to a refrigerator when possible

Access to an iron and ironing board when possible (cast can organise at hotel facilities for small hall venues)

RAVA Touring History

Year	Venue	Number Performances
2025	Fractured Fairy Tales	
19 & 20 May	Empire Theatre Armitage Centre Toowoomba	4
15 May	St George Cultural Centre	2
27 May	Gatton Shire Hall	1

Charlotte’s Web – three tours across regional Queensland.

Year	Venue	Number of performances
Oct 2018	Empire Theatre Studio premiere	6
Jan 2019	Empire Theatre Armitage Centre return season	6
17 September to 6 October 2019	Western Queensland Tour to: Oakey Cultural Centre Millmerran Civic Centre Crows Nest RSL	1 1 1

	Chinchilla Cultural Centre	1
	Dulacca Town Hall	1
	Dalby OLSC College Hall	2
	Somerset Civic Centre Esk	2
	Scenic Rim Arts Ablaze Festival	2
24 June to 27 July 2021	Toowoomba Empire Theatre (return season)	3
	Goondiwindi Theatre & Cinema	1
	Rockhampton Pilbeam Theatre	2
	Gladstone Entertainment Convention Centre	1
	Maryborough, Brolga Theatre	
	Sunshine Coast, Venue 114	1
	Ingham, TYTO Wetlands Amphitheatre	1
	Townsville Civic Theatre	1
	Charters Towers, World Theatre	2
	Mackay Entertainment Convention Centre (Festival of the Arts)	1
	Capella Cultural Centre	2
	Roma Cultural Centre	1
	Logan West Community Centre	1
		2

CAST BIOGRAPHIES

JACOB WATTON

Jacob Watton is a Queensland-based choreographer and performer working primarily in Brisbane and Toowoomba. Watton holds a Bachelor of Fine Arts in Dance Performance with first class honours from the Queensland University of Technology (QUT).

Jacob's premiered dance work *and JULIET* (2017) for Brisbane's SUPERCELL Contemporary Dance Festival showcased to a sold-out audience. He toured *and JULIET* alongside two smaller works to Toowoomba's Empire Theatres. In 2017, he presented '1:1', his dance and technology performance at the Ars Electronica Festival in Linz, Austria (2017).

Jacob Watton performed *Turbine* with Collusion Music and Dance as part of the Brisbane Powerhouse's Melt Festival (2018) then toured with it to China. He has danced in works by Richard Causer (*We Are Schadenfreude*), Gareth Belling (*Before*), Yolande Brown (*The Tipping Point*: Beijing Dance Tour), Jen Murray (*Brief Encounters*, *Vacancies of the Heart*), Matthew Lawrence (*A Short History of Life*), Csaba Buday (*Pack*), Lucas Jervies (*Smile*), and Jack Chambers (*Until Late*).

With theatre director Angela Chaplin, he collaborated on *If Only I Could*, a performance partnering with practitioners and residents of aged care facilities to unpack the themes of age and dance. He explored circus with director Chelsea McGuffin in a circus and contemporary dance hybrid, *Small Town Stuff*. He danced in *The Play of Light* choreographed by Elise May (Expressions Dance Company) for its premiere at the Curious Arts Festival 2019 and performed his choreography at the Busan International Dance Festival in South Korea.

His solo work *Alexa, Turn the Lights On*, a hybrid technology/performance work premiered for the 2020 Curious Arts Festival Toowoomba and played at the Wynnum Fringe and national Artlands Conference in 2021.

For RAVA Productions, Jacob played Templeton in three tours of *Charlotte's Web*, playing to more than 15,000 children in over 43 Queensland communities in 2019, 2021 and 2022. In 2022, he led over 50 workshops and community engagement activities for Queensland schools as RAVA Productions Education Coordinator.

Jacob has a vested interest in regional centres as vibrant hubs for creative and innovative art making. Providing opportunities for young artists to engage with new ideas and networks outside of their existing connections and opportunities is a major reason for touring regionally.



HARRISON PAROZ

Original Music Composition/Musician

Harrison is a professional musician, born and raised in Toowoomba. With a musical family regularly involved in the local arts community, it's not surprising he performed his first musical at age 5. He has been gigging professionally all-around South-East Queensland for the last 8 years. In 2019, he released his first original single "Certain", receiving playback via Triple J Unearthed and during COVID lockdown, Harrison regularly played live-streamed concerts from his couch. Along with music, he is a multi-skilled artist, dabbling in workshop facilitation, stage management, magic, clowning, juggling, stand-up comedy, MC-ing and theatre-making.

Harrison is one of RAVA's founding artists, performing as Pig in the premiere and two tours of *Charlotte's Web* (2019-2022). He wrote original music, was Musical Director and played Mr Toad for RAVA Production's newly imagined version of *The Wind in the Willows* (2021/22). Harrison collaborated with Angela Ponting to devise the cabaret show "Please Swipe Right" featuring original music that premiered in 2022. Harrison has added further strings to his bow, working as a guitar teacher, drama facilitator, karaoke host and regular acoustic singer/songwriter at venues across Brisbane and the Darling Downs. Highlights of his on-stage theatrical life include playing 'Barféé' in *The 25th Annual Putnam County Spelling Bee* and Aaron's mate in *First Date*, both by Shoebox Theatre Company, and involvement with the Empire Theatre's IMPACT Ensemble (2012 to 2016).



ALISON VALLETTE:

RAVA Productions Director/Choreographer

Alison has a long background in classical ballet and musical theatre commencing her professional career at aged 10. She has danced in many productions both in Australia and overseas, including working for Cameron Macintosh in Oklahoma both National tour and London West End. Alison returned to Australia where she toured with “Joseph and the Amazing Technicolor Dreamcoat” for Bill Kenwright Productions.

Her dramatic credits include Gwennie – “Under Milk Wood” Louise – “Carousel”, Alice – “Go Ask Alice” Louise Beauchamp – “Night of the Ding Dong” U/S Ado Annie and Aunt Ella - “Oklahoma!” Justine – “Cosi” and Kate in “Sylvia”. Her choreographic credits to date include “Joseph and the Amazing Technicolor Dreamcoat”, “West Side Story”, Oklahoma”, “Jesus Christ Superstar”, “Sweet Charity”, “Beauty and the Beast”, “Cabaret”, “25th Annual Putnam County Spelling Bee”, “Singin in the Rain”, “Spamalot” “The Boy from Oz”, “Phantom of the Opera” & Esgee’s Pirates of Penzance . Her directorial credits include “Cats”, “Hairspray”, “The Wizard of Oz”, “Mary Poppins” and “Wicked” for Empire Theatre.



RUTH ATKINSON:

RAVA Productions Creative Producer

Ruth wears several professional arts hats. With Alison Vallette, she has been Creative Producer for RAVA Productions since inception in 2018, leading its touring and production strategies. She has been a founding Director for the Curious Arts Festival since 2018 and has been appointed as one of the Creative Business Champions (2021 & 2022) for the Regional Arts Service Network.

Ruth was Director at the Judith Wright Centre of Contemporary Arts (2008-2016), where she founded the Fresh Ground artist-in-residence program aimed at the development of contemporary performances by Queensland artists.

Ruth's career began directing television productions and radio programming before segueing to performing arts tour management for the Northern Australian Regional Performing Arts Centres Association (NARPACA now known as Stage Queensland). Her career continued to grow through arts marketing, venue programming and event management roles at Empire Theatre Toowoomba, QUT Garden’s Theatre and QUT Art Museum.

She is a business partner/CEO for Visual Focus, an audio-visual integration company based in Toowoomba. She holds an MBA and Post Graduate qualification in Arts and Cultural Management from Uni SA and a Bachelor of Business (Marketing) from Central Queensland University.



Connect with RAVA Productions

www.ravaproductions.com.au

www.facebook.com/RAVAProductions

RAVAProductionsTmba@gmail.com

Mobile (Ruth): 0437 938 272