

# WAYFINDER

## Technical Specifications



BRISBANE  
FESTIVAL

Brisbane Festival is an initiative of the Queensland Government and Brisbane City Council



NORTH AUSTRALIAN  
FESTIVAL OF ARTS



Queensland  
Government



Australian Government



Creative  
Australia



Australian Government  
RISE Fund



SUPPORTED BY

City of  
Townsville

**DANCENORTH** AUSTRALIA

**C O N T A C T S**

Hillary Coyne  
Executive Director & Co-CEO  
Cnr Stanley & Walker Streets  
Townsville QLD 4810 Australia  
+61 (0) 7 4772 2549  
hillary@dancenorth.com.au

Candice Marshall  
Production Manager  
Cnr Stanley & Walker Streets  
Townsville QLD 4810 Australia  
+61 (0) 435 490 094  
candice@dancenorth.com.au

**S H O W I N F O R M A T I O N / O V E R V I E W**

Physical exuberance, sonic resonance, and collective exhilaration explode onto stage in a kaleidoscopic fusion of dance, music, and visual art.

Directed by Amber Haines and Kyle Page, Dancenorth Australia joins forces with three-time Grammy nominated Australian band Hiatus Kaiyote and sound artist Byron J. Scullin to create a soaring composition evoking pleasure and possibility. An undulating sound sculpture condenses and expands this scintillating score, immersing audiences in a new sonic dimension. Japanese-Australian visual artist Hiromi Tango offers her joyful, heart expanding artwork to both the stage design and costumes for this sublime new performance, featuring lighting design by Niklas Pajanti.

Speaking to our sensorial nature, WAYFINDER reminds us of a state of being that transcends the words that have come to define us. Navigating bigger and more ancient reference points, WAYFINDER recognises connection as the central axis of the universe. By the stars, the waves, and the sun, we find our way.

**T O U R I N G C O M P A N Y**

The touring company requires travel (flights), accommodation and ground transport.

2 x Co-Director / Choreographer  
1 x Production Manager  
1 x Stage Manager  
1 x Production Technician (Lighting)  
1 x Production Technician (Audio)  
8 x Dancers

**T R A V E L / G R O U N D T R A N S P O R T**

Accommodation provided should be walking distance from the performance venue, with no longer than a 15-minute walking commute between accommodation and venue. If this is not possible, the Presenter to provide suitable ground transport such as a venue pool car, hire car or taxis for the touring party, including access to onsite parking as required. Airport transfers will need to be provided on arrival and departure.

**R E H E A R S A L V E N U E**

A rehearsal space will be required for the performers to host company class (warm up). This space should be onsite, but if not possible, this space may be offsite but no more than fifteen minutes from performance venue (on foot or ground transport). This space should have a floor suitable for dance (ideally a sprung wooden floor covered with Tarkett) with access to a PA via 3.5mm jack for phone or laptop playback.

**SHOW / FOH INFORMATION**

WAYFINDER runs for approximately 55 minutes.

- Strobe and theatrical lighting
- Black outs
- Theatrical haze
- Sound levels
- 'Pearls' light and sound active orbs.

Latecomers will be permitted to enter approximately 5 minutes after Clearance/show up.

The Company Stage Manager can notify FOH of latecomers.

---

**PEARLS**

Light and sound active 'Pearls' will be preset in the auditorium (on seats) before House Open. FOH and show crew may be asked to assist in the distribution and return of the 'Pearls' – preshow and post show. PPE including cleaning wipes, gloves and masks will be supplied by Dancenorth to the venue team managing the 'Pearls'. We ask the FOH team to monitor the 'Pearls' to ensure the equipment remains in the theatre. The 'Pearls' are property of Dancenorth.

---

## TECHNICAL REQUIREMENTS

The requirements outlined in **GREEN** are to be supplied by the PRESENTER.

The requirements outlined in **BLUE** will be supplied by the company DANCENORTH.

### VENUE / STAGE

PRESENTER to supply:

- Performance/stage space of 12 metres x 12 metres. Suitable for barefoot and floorwork (choreography) – flat, level with no imperfections.
- Tarkett (in excellent condition) to cover the performance/stage space.
- Masking, including legs, borders, smothers, panorama as per Lighting Plan and Hanging Plot.
- FOH calling and operator position.

### BACK OF HOUSE

PRESENTER to supply:

- 2 x Dressing Rooms suitable for a company of 8 (4 per room). Dressing Rooms should include mirrors, chairs, workbench space / tables, bathroom with shower, costume racks as required.
- Dressing Room access outside of company calls.
- 1 x room/space suitable as Production/Creatives office if possible.
- Access to laundry/wardrobe amenities including washing machine, dryer, iron, steamer, drying cupboards etc.
- Laundry/wardrobe amenities outside of company calls.
- 1 x room/space suitable for a Green Room, including microwave, fridge, hot water/kettle/urn, water filter/cooler.
- Ice (including ice packs)
- First Aid supplies
- WiFi access

**S E T**

WAYFINDER is designed for a proscenium or black box style venue with clean lines and defined performance area/space.

Please refer to APPENDIX 4 for freight and carnet information.

DANCENORTH to supply:

- 8 metres x 8 metres – inflatable black floor
- The Garden – 5 metres x 2 metres @ 200mm printed inflatable set.
- The Prawn – 4 metre long set element (fabric). Flown, with respective rigging.
- Kabuki (cloth drop) – 3 metres x 600mm, with respective rigging.
- 100 x light and sound active 'Pearls', with respective network and charging stations.

PRESENTER to supply:

- BLACK Tarkett to cover the required 12 metres x 12 metres of performance space/stage. Tarkett lay running across stage (Prompt Side to Opposite Prompt) is preferred.
- BLACK ~~flat~~ smother hung/rigged +1 metre from upstage edge of Tarkett and performance space.
- Masking, including legs, borders, smothers, panorama as per the Lighting Plan and Hanging Plot. 5 sets of legs at 2 metre intervals from proscenium / setting line.
- Access to rigging and tie-off positions (for kabuki and The Prawn)
- Trestle tables – Prompt Side and Opposite Prompt.

**L I G H T I N G**

Please refer to APPENDIX 1 for the WAYFINDER Standard Lighting Plan. Venue specific plans will be released once confirmed.

All electrical equipment supplied by Dancenorth will be tested and tagged prior to bump in.

All substitutes need approval from Dancenorth Production & Operations Manager.

PRESENTER to supply:

- Experienced Lighting Technicians (as per Production Schedule)
- All cabling, including power and data (DMX and ethernet) to suit the Lighting Plan.
- Access to all venue stock and fixtures (as per Lighting Plan). Please contact Dancenorth Production Manager immediately of any unavailability and substitutions.
- Access to in house haze machine suitable for the venue size and capacity, including Fire Warden staffing requirements as per venue policies.
- House lights control via the lighting console.

- All consumables – tape, bubbles, zip ties etc.

**SHOW LIGHTING HIRE PACKAGE:**

- ETC ION XE20, with respective infrastructure.
- 36 x Source4 Lustr 2. 36deg.
- 19 x Martin Mac Encore Performance CLD
- 8 x Mac Aura XB
- 1 x MDG ATMe
- 2 x Stormy CC Strobe
- 4 x LED UV Flood
- 18 x 2 metre booms (for 36 x Source4 Lustr 2. 36deg.)
- 4 x 2 metre box truss, and respective bases.
- 2 x Iris (for Source 4 Lustr 2)

DANCENORTH to supply:

- 2 x MacBook Pro as Dancenorth QLab MASTER (1) and backup (1).
- 1 x MacBook Pro – ‘Pearls’ control and maintenance.
- 2 x MOTU digital audio interface.
- 1 x Network hub – QLab to ‘Pearls’ control.
- 1 x AMPLIFI WiFi network for ‘Pearls’ control.
- Respective cables for show control.
- 100 x light and sound active ‘Pearls’, with respective network and charging stations.

**A U D I O**

Please refer to APPENDIX 2 for the WAYFINDER Audio/Systems Plan. Venue specific plans will be released once confirmed.

PRESENTER to supply:

- In-House Standard FOH PA system, including Subs (2).
- 2 x speakers rigged/flown upstage (downstage of smother) 2 metres from centre line, L-R, with 4 metre trim height.
- Digital FOH audio console, with basic effects.
- Centre Cluster and Front Fill speakers, pending coverage of FOH PA system. Front Fill speakers need to be rigged to the front of stage or in the auditorium (in front of the stage) on plinths. No speakers on stage please.
- 6 x on stage foldback for the Company Dancers. Preferred setup in 3 x speakers per side.

- 2 x radio microphones for the season.

DANCENORTH to supply:

- 2 x MacBook Pro as Dancenorth QLab MASTER (1) and backup (1).
- 1 x MacBook Pro – ‘Pearl’ control and maintenance.
- 2 x MOTU digital audio interface.
- 1 x Network hub – QLab to ‘Pearl’ control.
- 1 x AMPLIFI WiFi network for ‘Pearl’ control.
- Respective cables for show control.
- 100 x light and sound active ‘Pearls’, with respective network and charging stations.

## C O M M S I N F R A S T R U C T U R E

The show is run entirely from OSC via QLab to the lighting console.

PRESENTER to supply:

- Comms infrastructure. Wireless comms preferred and required for personnel side stage, particularly for the Dancenorth Stage Manager, who actions the deck plot live.

Comms required:

- \*Dancenorth Production Manager
- \*Dancenorth Stage Manager
- \*Dancenorth Production Technician (Lighting)
- \*Dancenorth Production Technician (Audio)
- \*Lighting Systems Technician (VENUE)
- \*Audio/Systems Technician (VENUE – if required as part of base venue team on show)
- \*Mech/Flys (VENUE – if required as part of base venue team on show)

## PRODUCTION SCHEDULE

Please refer to APPENDIX 3 for WAYFINDER Production Schedule is based on the understanding a full technical pre-rig and fixture address is complete before the company's arrival.

Double show days are not considered possible, due to the nature of the work.

### DANCENORTH TOURING PRODUCTION TEAM

Dancenorth will operate the show for the season.

- 1 x Dancenorth Production Manager
- 1 x Company Stage Manager
- 1 x Production Technician (Lighting)
- 1 x Production Technician (Sound)

### SHOW CALLS

All show/venue personnel are to remain the consistent from technical rehearsal to end of season.

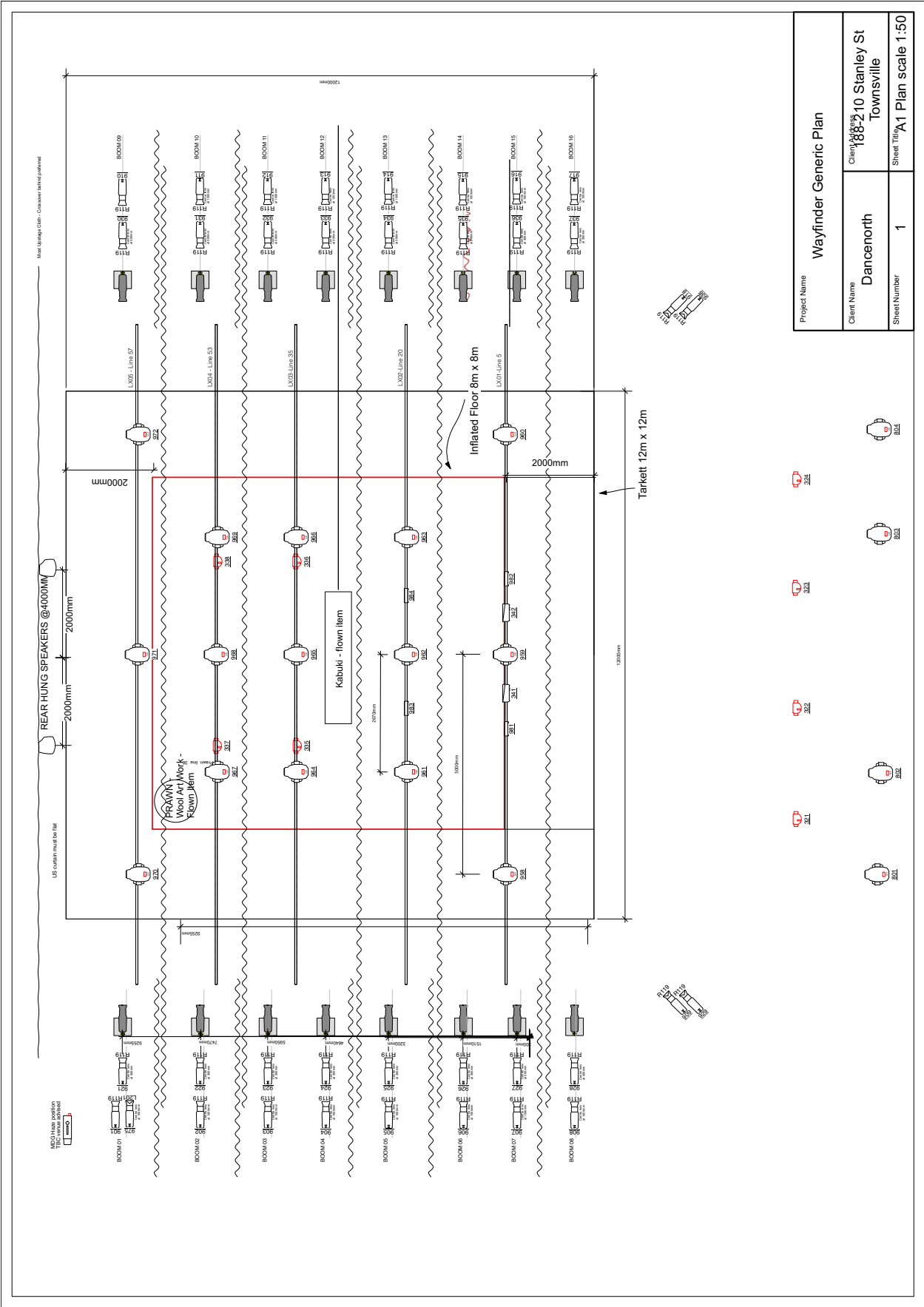
- 1 x Lighting Systems Technician
- 1 x Audio/Systems Technician
- 1 x Mechanist/Flyman (pending venue style)
- 1 x Wardrobe Maintenance

### BUMP IN / BUMP OUT

Please refer to APPENDIX 3 for Standard Production Schedule. Venue specific Production Schedule will be released once confirmed.



APPENDIX 1 / LIGHTING PLAN



## APPENDIX 2 / AUDIO

### SHOW AUDIO OVERVIEW

- The show is playback only. No live audio.
- Playback is standard stereo L-R only.
- Standard FOH PA, with two top boxes rigged/hung downstage of the smother (upstage). The sound image should be from onstage (with the FOH PA as reinforcement).
- Cue and levels are plotted and played via the touring QLab show control.
- The 'Pearls' playback (via 100 x light and sound active orbs) is independent of the main in-house system.

### SYSTEM DESIGN

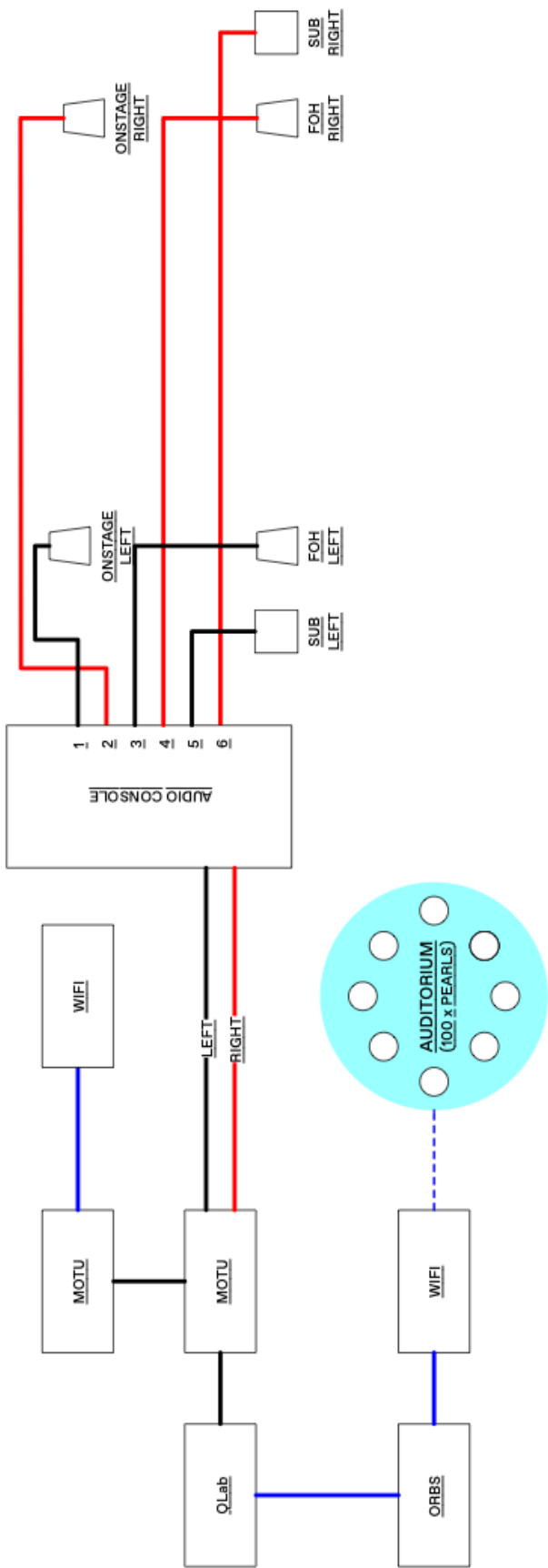
- Onstage PA (two top boxes rigged upstage) is the 'main system'.
- The Standard FOH PA is time aligned as the 'reinforcement system'.
- Subs must be independent and will be balance separately.

### SYSTEM CONFIGURATION

#### PRE-RIG REQUIREMENTS – COMPLETE PRIOR TO COMPANY ARRIVAL:

- Onstage PA should be rigged/hung, focussed and tested.
- FOH PA should be in position, focused, and time aligned (delayed) to the onstage PA.
- Onstage PA = 0
- FOH PA should be delayed based on distance and elevation to the onstage PA.
- The audio console must be configured for the stereo feed from QLab to the FOH PA via the respective outputs.
- Set level for onstage PA – between 70-80dB (SPA A frequency weightings).
- Set level for FOH PA – adds 10-20dB to overall level. FOH PA should not onstage PA.
- The Dancenorth Production Technician (Audio) will work with the in-house Audio/AV Systems Technician to refine and set a 'show level' for the full PA system.
- All level updates will be performed in the QLab show file once the PA is set.

SYSTEM SCHEMATIC



OUTPUT #	POSITION
1	ONSTAGE L
2	ONSTAGE R
3	FOH L
4	FOH R
5	SUB L
6	SUB R

## APPENDIX 3 / PRODUCTION SCHEDULE

THIS PRODUCTION SCHEDULE AND SHOW DELIVERY (ON DAY TWO) IS BASED ON A FULL LIGHTING AND STAGING PRE-RIG COMPLETED - INCLUDING POWER, DATA AND FLASH PRIOR TO COMPANY'S ARRIVAL.  
VENUE SPECIFIC PRODUCTION SCHEDULES WILL BE NEGOTITATED AND RELEASED AS REQUIRED.

START	END	WORK	DN PERSONNEL	VENUE STAFF			NOTES
PRE-RIG				MX	LX	SND	
4 HOUR CALL		<b>LIGHTING BUMP IN</b> / OVERHEADS, FOH, BOOMS	DN TBN		4		# NEGOTIABLE BASED ON VENUE
		<b>SOUND BUMP IN</b>	DN TBN			2	# NEGOTIABLE BASED ON VENUE
		<b>MASKING BUMP IN</b>	DN TBN	2			# NEGOTIABLE BASED ON VENUE
DAY 1				MX	LX	SND	
9:00 am	9:30 am	UNLOAD TRUCK	PM, PTECH (LX), PTECH (SND), SM	2			
9:00 am	11:00 am	<b>DANCENORTH BUMP IN</b> / MARK UP / MASKING CHECKS / OPS BUMP IN	PM, PTECH (LX), PTECH (SND), SM		4	2	
11:00 am	1:00 pm	<b>LIGHTING CHECKS/FOCUS</b> (WHEN POSSIBLE)	PTECH (LX)	2	4		
11:00 am	12:30 pm	<b>INSTALL KABUKI</b>	PM, SM				
11:00 am	1:00 pm	<b>SOUND INSTALL</b>	PTECH (SND)			2	
12:30 pm	1:00 pm	<b>SHOW CONTROL CHECKS</b>	PM, SM				
12:30 pm	2:00 pm	<b>COMPANY CLASS</b>	COMPANY				
12:30 pm	2:00 pm	<b>TARKETT INSTALL / SHOW FLOOR</b>	PM, SM	2			
1:00 pm	2:00 pm	LUNCH					
2:00 pm	2:30 pm	<b>COMPANY PREP / BREAK</b>					
2:00 pm	3:00 pm	<b>LIGHTING CHECKS/FOCUS</b>	PTECH	1	4		
2:30 pm	5:00 pm	<b>PLOT / SPACING CALL</b>	PM, PTECH (LX), PTECH (SND), SM	1	4	1	
5:00 pm	6:00 pm	DINNER					
6:00 pm	7:00 pm	PREP / TECHNICAL REHEARSAL	PM, PTECH (LX), PTECH (SND), SM	1	1	1	
7:00 pm	9:00 pm	<b>PLOT / TECHNICAL REHEARSAL</b>	PM, PTECH (LX), PTECH (SND), SM	1	1	1	
9:00 pm	9:45 pm	PRODUCTION NOTES	PM, PTECH (LX), PTECH (SND), SM	1	1	1	
9:45 pm	10:00 pm	PACK DOWN / WASH UP		1	1	1	
10:00 pm		FINISH					
DAY 2				MX	LX	SND	
9:00 am	11:30 am	<b>TECHNICAL NOTES</b>	PM, PTECH (LX), PTECH (SND), SM	1	1	1	
11:30 am	1:00 pm	<b>TECHNICAL STEP THROUGH</b>	PM, PTECH (LX), PTECH (SND), SM	1	1	1	PRODUCTION ONLY
2:00 pm		ENSEMBLE CALL					
2:15 pm	3:30 pm	<b>ENSEMBLE CLASS</b>					
1:00 pm	2:00 pm	LUNCH					
2:00 pm	4:00 pm	<b>TECHNICAL PREP</b>	ALL	1	1	1	
3:30 pm	4:00 pm	PRE HAB	COMPANY				
4:00 pm	4:15 pm	ENSEMBLE BREAK					
4:15 pm	6:00 pm	<b>TECHNICAL REHEARSAL</b>	ALL	1	1	1	
6:00 pm	7:00 pm	DINNER					
7:00 pm	8:00 pm	SHOW CALL / PREP		1	1	1	
7:15 pm	7:45 pm	PRESET ORBS					
8:00 pm	9:00 pm	<b>PERFORMANCE</b>	ALL	1	1	1	
9:00 pm	11:00 pm	BUMP OUT	ALL	2	2	1	TO BE NEGOTIATED PER VENUE
10:30 pm	11:00 pm	LOAD TRUCK	PM, PTECH (LX), PTECH (SND), SM	2			
11:00 pm		FINISH					

## APPENDIX 4 / FREIGHT

### FREIGHT

ITEM	DESCRIPTION	WEIGHT KG	VOLUME	LENGTH m	WIDTH m	HEIGHT m
1	PALLET (SHOW FLOOR)	250 KG	1.74	1.45	1.2	1
1	MEGA BIN (SET)	170 KG	1.44	1.2	1.2	1
1	MEGA BIN (TECHNICAL)	150 KG	1.44	1.2	1.2	1
1	PALLET (PEARLS)	100 KG	2.16	1.2	1.2	1.5
1	KABUKI	10 KG	0.72	3	0.6	0.4

### PACKING LIST

<b>PALLET</b>	SHOW FLOOR SET ELEMENT WARM UP FLOOR	8 metres L x 8 metres W x 0.2 metres H 5 metres L x 2 metres W x 0.2 metres H 6 metres L x 2 metres W x 0.2 metres H
<b>MEGA BIN 1</b>	SET ELEMENTS SET ELEMENT (The Prawn)	LENGTHS OF WOOL FLOWN WOOL SCULPTURE
<b>MEGA BIN 2</b>	2 x SUITCASES TECHNICAL CASE TECHNICAL CASE WIFI SYSTEM PUMPS REHEARSAL KIT	COSTUMES SHOW CONTROL EQUIPMENT TOOLS, TAPE AMPLIFI KIT  EXECERISE EQUIPMENT, BLUETOOTH SPEAKER
<b>PALLET</b>	12 x WOODEN BOXES	8 PER BOX x 200mm LIGHT/SOUND 'PEARLS', BATTERIES AND CHARGERS
<b>KABUKI</b>	CLOTH DROP	3 metres x 0.6 metres metal frame, with respective rigging.